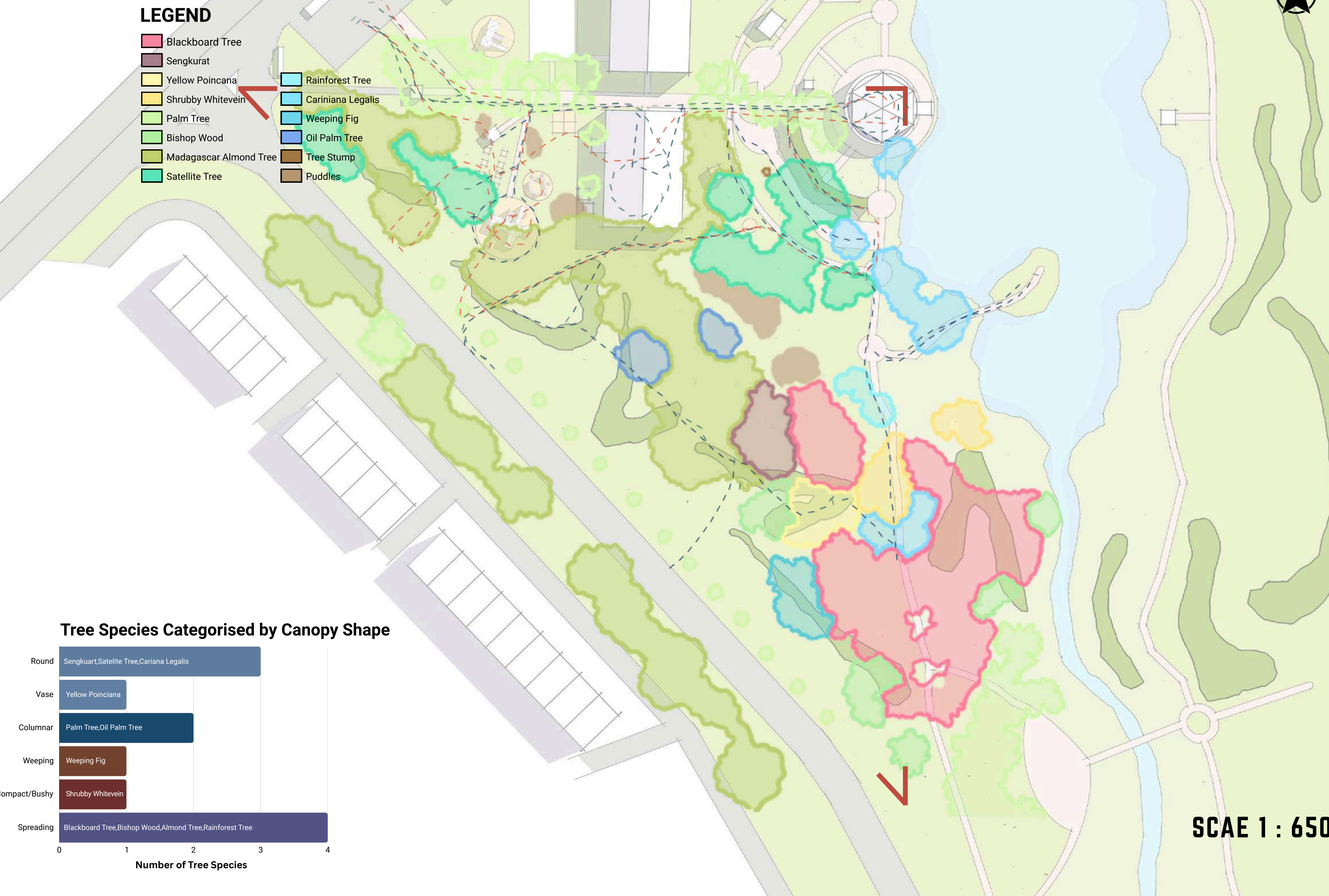
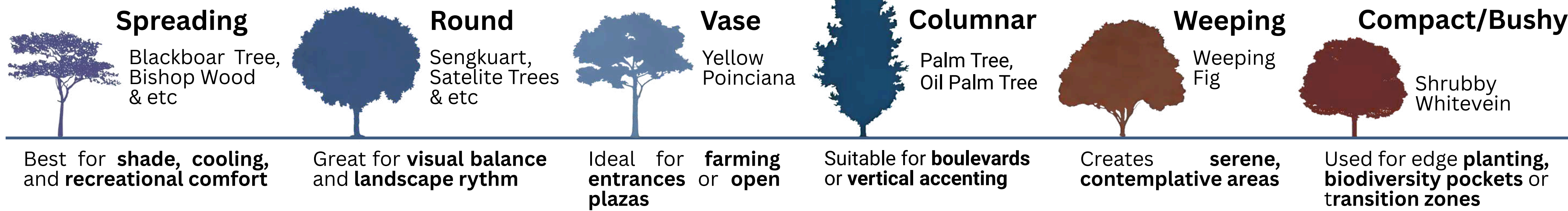
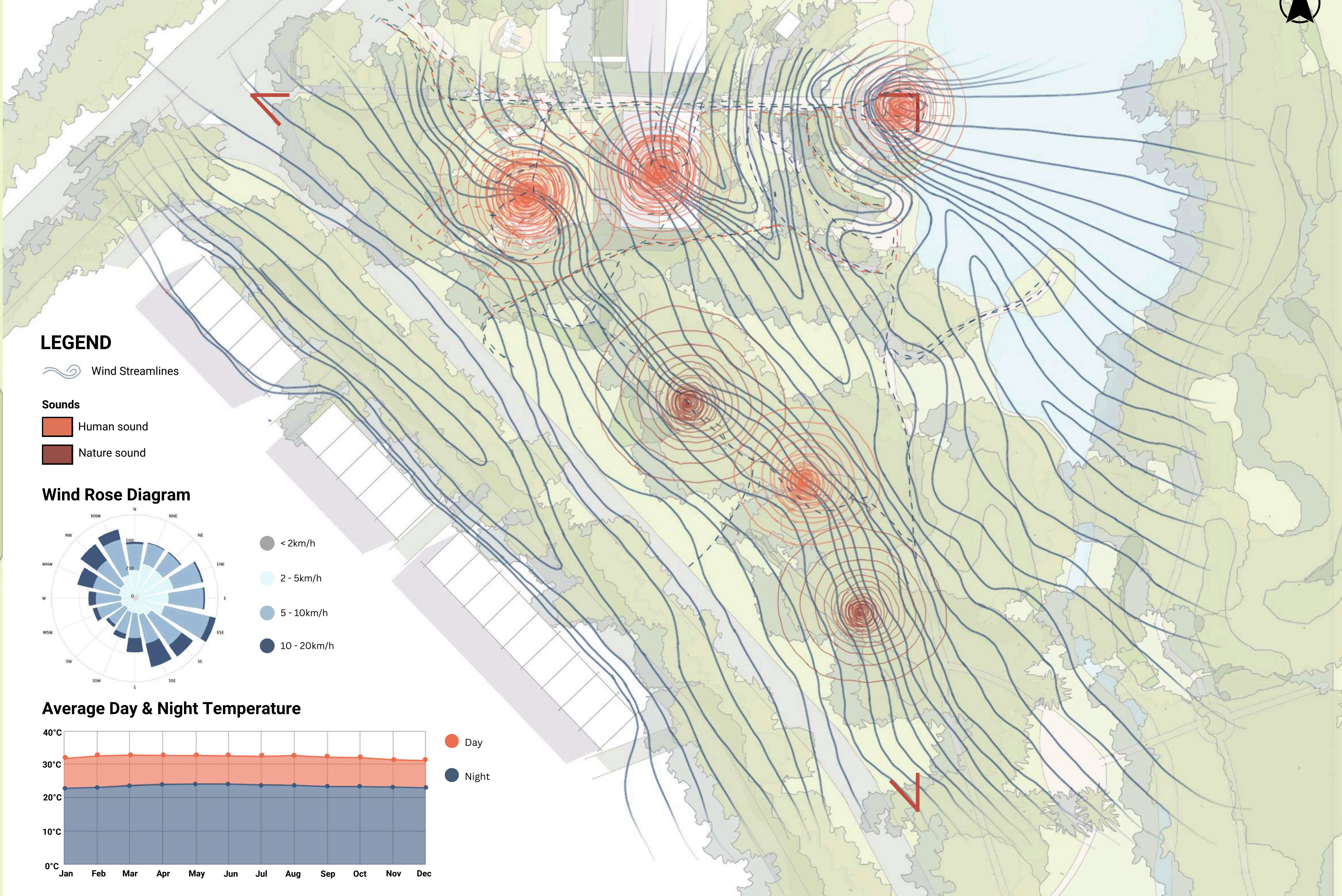




NATURAL FEATURES



INTANGIBLE FEATURES



MOMENT CAPTURED







The footprints of the community form the **identity** and **culture** of Taman Wawasan Recreational Park. Through **daily routines**, people **continuously shape** the park's **spatial character** over time. By studying these human nodes and the patterns they create, we uncover how the space is truly experienced.

**Tai Chi Practitioners**  
"The Tai Chi practitioners don't have their own space, so they end up using the badminton court and are spread out all over the park."

**Park Exercisers**  
"There's **no place to rest after exercising**. Some seating and a pit-stop would help."

**Pet Walkers**  
"People often walk their dogs here, but some users aren't comfortable with that. So there are plans to build a dog exercise park to keep the dogs in a specific area."

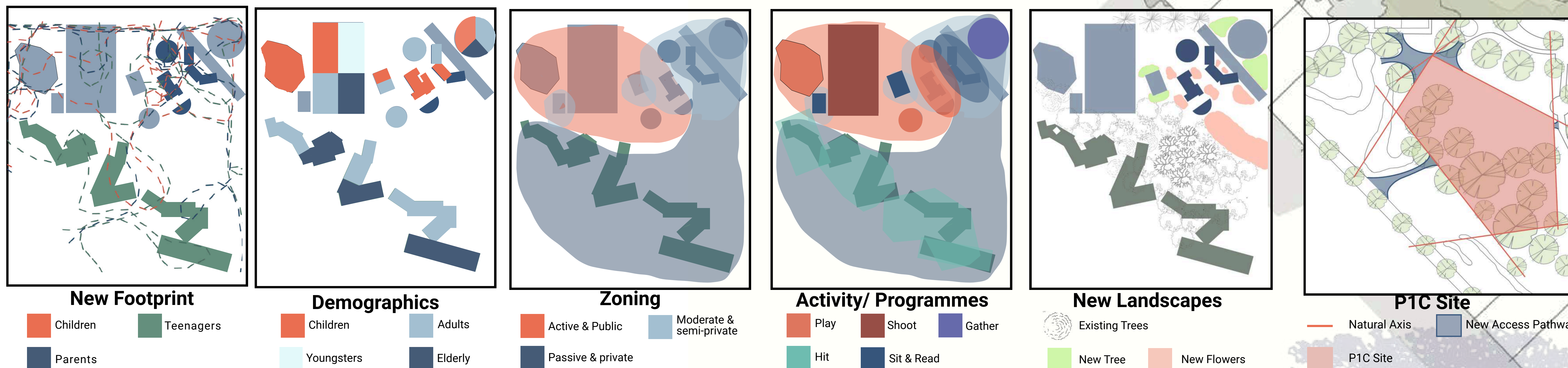
**Children**  
"The children are hoping for more variety in the playground, like a skateboarding area and a volleyball court, so they have more ways to play."

**People with disability**  
"The park lacks disabled-friendly features—like accessible playground equipment and smooth entrances—so it's hard for people with disabilities to enter or enjoy the space."

**Community farmers**  
"The mini market is **exposed to the weather** and **doesn't have any shade**, so they can't really operate when it rains."

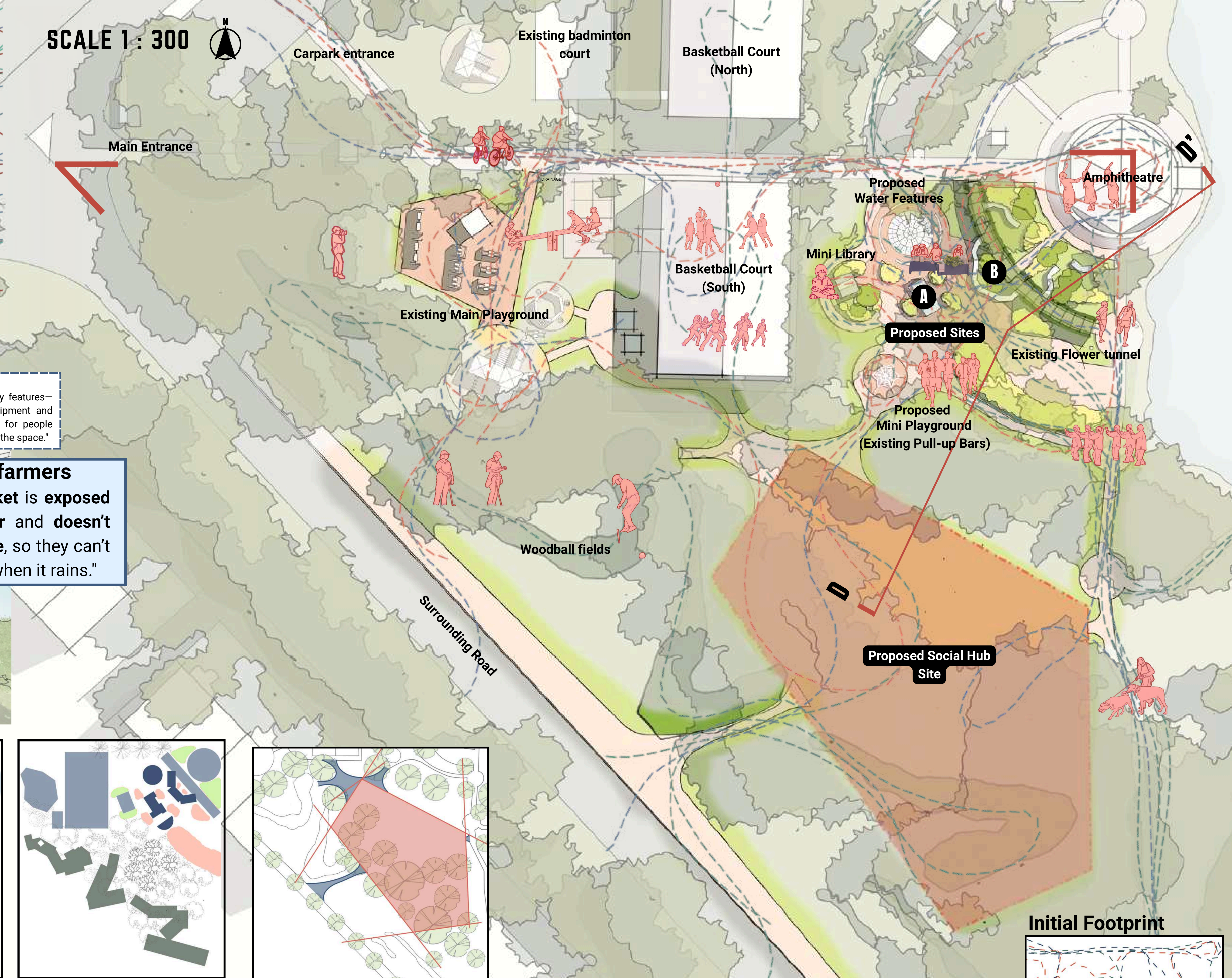
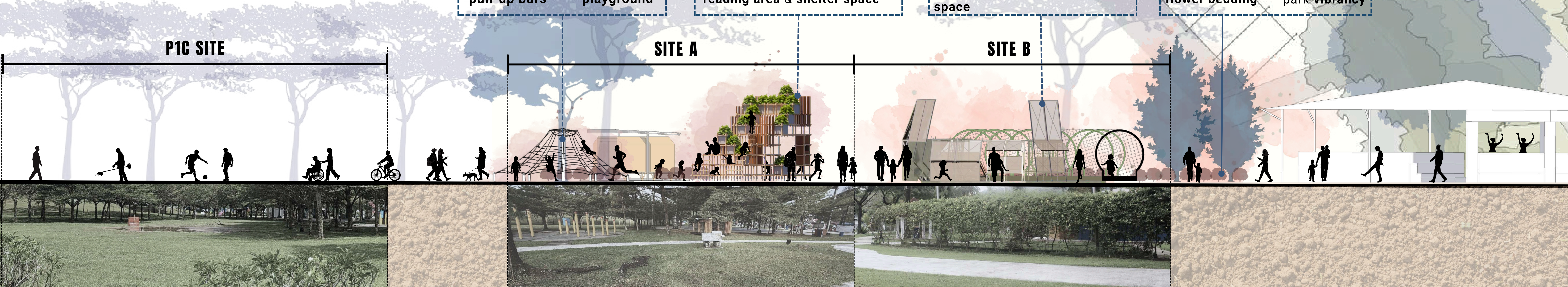
**Children**  
"The **library doesn't have enough seating** and has insufficient lighting, so it's hard to read books there."

## COMMUNITY VOICES

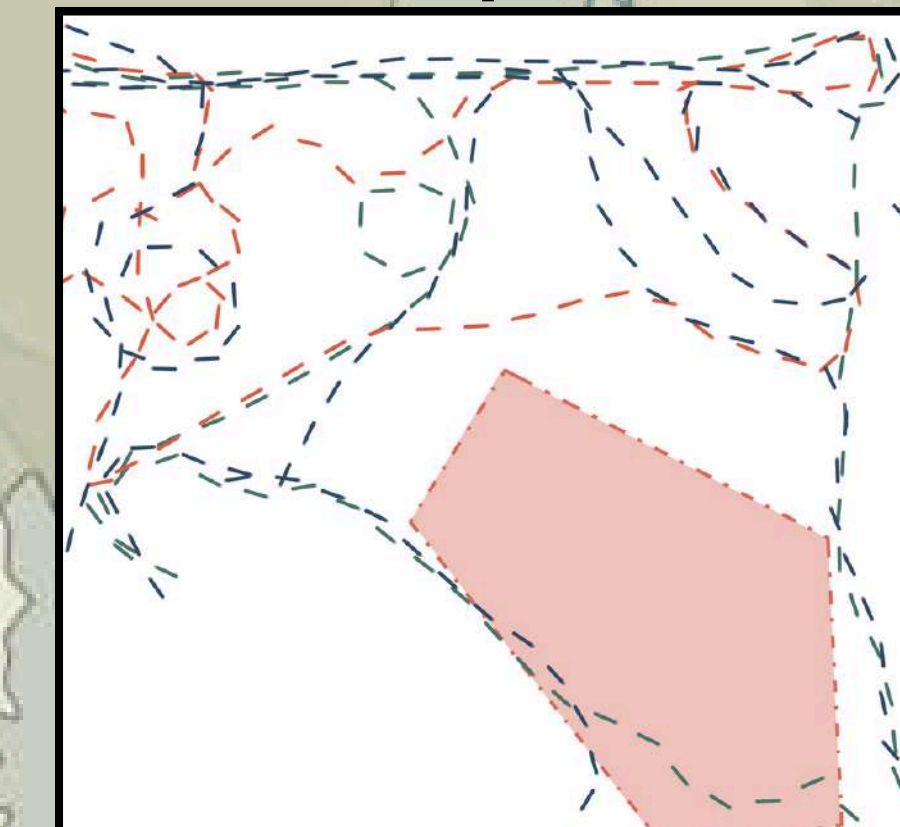


## REFORMED FOOTPRINT (SECTION D - D')

SCALE 1 : 75

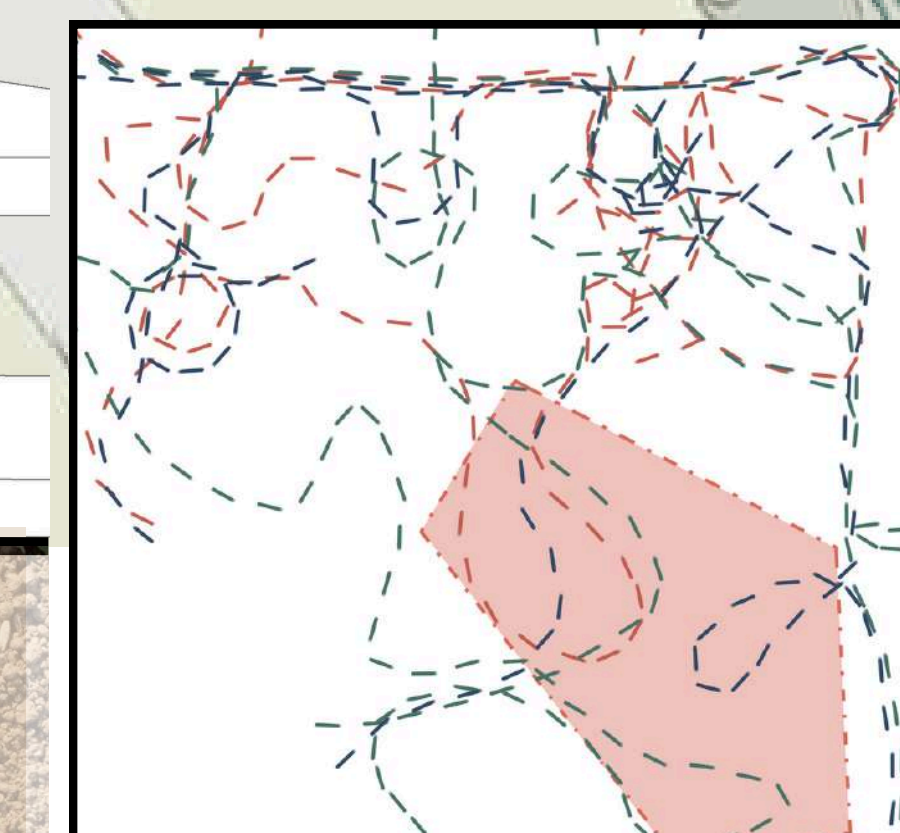


### Initial Footprint



Limited interaction with low engagement from human nodes.

### After interventions



Human nodes visibly drawn into the site.



# SITE A



# MICRO MASTER PLAN SCAE 1 : 150



# SITE B



## MICROSITE FOOTPRINTS

